

**Office of the Colorado State Court Administrator
Water Data Presented to the Supreme Court Water Committee
2/11/2008**

INDEX OF TABLES AND GRAPHS

Table 1: Statewide Water Filings by Case Type.....	3
Table 2: Trials	4
Table 3: Percent of Filings by Case Type	5
Table 4: Percent of Filings by Case Type and By Division	6
Table 5: Time to Disposition.....	7
Figure 1: Time to Disposition	8
Table 6: Division 1, filings by case type FY 2001-2007	9
Table 7: Division 2, filings by case type FY 2001-2007	10
Table 8: Division 3, filings by case type FY 2001-2007	11
Table 9: Division 4, filings by case type FY 2001-2007	12

Table 10: Division 5, filings by case type FY 2001-2007	13
Table 11: Division 6, filings by case type FY 2001-2007	14
Table 12: Division 7, filings by case type FY 2001-2007	15
Graph 1: Statements of Opposition Filed Per Case, FY 1998-2007	16
Table 13: Rereferrals and Rates of Rereferrals by Number of Opposers.....	17
Graph 2: Median Time to Filing Summary of Consultation.....	18

Table 1: Statewide Water Filings by Case Type

<u>CaseType</u>	<u>Fiscal Year Case Filed</u>							<u>Total</u>	<u>Percent</u>
	<u>2001</u>	<u>2002</u>	<u>2003</u>	<u>2004</u>	<u>2005</u>	<u>2006</u>	<u>2007</u>		
Augmentation	68	82	154	116	113	152	104	790	8.37%
Change	158	171	214	145	147	134	168	1137	12.05%
Findings of Diligence	235	345	318	251	250	266	277	1943	20.59%
Injunction	33	34	12	20	13	14	26	152	1.61%
Multiple	91	148	180	127	117	121	117	901	9.55%
Other	58	43	39	50	27	21	15	253	2.68%
Protest to Abandonment	1	113	7	3	2	0	1	127	1.35%
Petition for Review	0	0	0	0	0	0	2	2	0.02%
Surface	337	306	334	258	203	302	217	1957	20.74%
Storage	61	59	89	68	38	60	43	418	4.43%
To Make Absolute	110	120	101	100	88	145	120	784	8.31%
<u>Underground</u>	<u>127</u>	<u>147</u>	<u>221</u>	<u>147</u>	<u>111</u>	<u>88</u>	<u>131</u>	<u>972</u>	10.30%
TOTAL	1279	1568	1669	1286	1110	1303	1221	9436	

Table 2: Statewide Rates of Trial

	Fiscal Year Trial Held						
	2001	2002	2003	2004	2005	2006	2007
Trials	4	12	12	7	9	9	14
Filings	1267	1559	1669	1286	1109	1303	1221
Rate of Trial	0.32%	0.77%	0.72%	0.54%	0.81%	0.69%	1.15%

TABLE 3: Percent of Filings by Case Type, Average FY2001-2007

<u>Case Type</u>	<u>Percent of Total Cases, FY2001-2007</u>
Surface	20.74%
Findings of Diligence	20.59%
Change	12.05%
Underground	10.30%
Multiple	9.55%
Augmentation	8.37%
To Make Absolute	8.31%
Storage	4.43%
Other	2.68%
Injunction	1.61%
Protest to Abandonment	1.35%
Petition for Review	0.02%

Table 4: Percent of Filings by Case Type and Division

<u>Case Type</u>	<u>Percent of Division Total, FY2001-2007</u>						
	<u>Division 1</u>	<u>Division 2</u>	<u>Division 3</u>	<u>Division 4</u>	<u>Division 5</u>	<u>Division 6</u>	<u>Division 7</u>
Augmentation	19.20%	4.89%	3.58%	4.25%	6.79%	0.71%	1.63%
Change	14.05%	11.47%	47.56%	9.85%	8.11%	8.83%	12.16%
Findings of Diligence	15.94%	11.67%	10.42%	16.15%	36.72%	17.09%	17.42%
Injunction	1.41%	10.77%	1.95%	0.00%	0.00%	0.14%	0.25%
Multiple	4.07%	23.73%	3.91%	6.78%	13.01%	7.12%	9.65%
Other	2.50%	2.79%	4.89%	1.29%	1.40%	11.40%	1.50%
Protest to Abandonment	1.21%	1.50%	4.89%	0.43%	1.49%	0.71%	2.51%
Petition for Review	0.00%	0.10%	0.33%	0.00%	0.00%	0.00%	0.00%
Surface	5.19%	16.25%	9.77%	42.14%	13.72%	34.33%	37.34%
Storage	4.19%	2.29%	0.33%	7.21%	2.94%	9.69%	2.63%
To Make Absolute	4.23%	3.39%	3.26%	10.93%	13.32%	6.84%	10.03%
Underground	28.02%	11.17%	9.12%	0.97%	2.50%	3.13%	4.89%
TOTAL	100.00%	100.00%	100.00%	100.00%	100.00%	100.00%	100.00%

TABLE 5: Colorado Water Courts, Time to Disposition

(those cases closed in FY 2007)

<u>Case Type</u>	<u>Median Time to Disposition</u>	<u>Number of Cases Disposed</u>
Augmentation	1.12 Years	139
Change	2.21 Years	117
Findings of Diligence	0.9 Years	237
Injunction	0.18 Years	21
Multiple (multiple case types)	1.81 Years	106
Other	1.81 Years	29
Surface	0.82 Years	231
Storage	1.47 Years	48
To Make Absolute	0.85 Years	114
Underground	1.06 Years	103
Total Statewide (all case types)	1.01 Years	1145

FIGURE 1: TIMES TO DISPOSITION

Statewide Age of Water Cases Brought to Disposition
In FY 2007 at Disposition Date, Percentile Range, n=1150

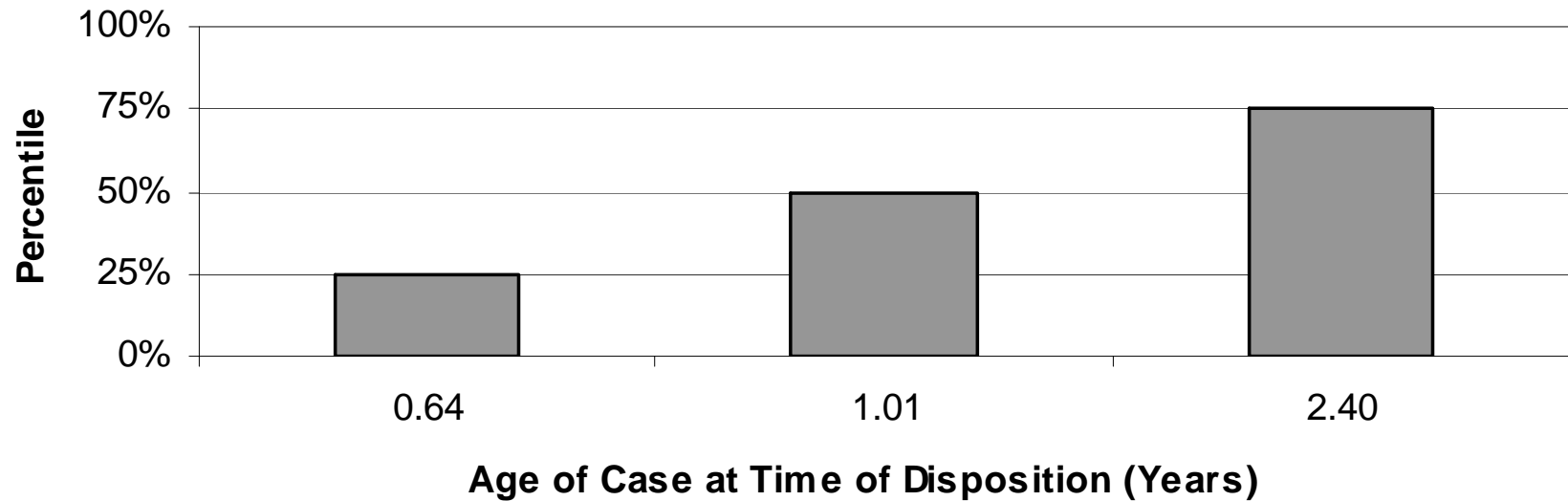


TABLE 6: Division 1, Case Filings by Type, FY2001-2007

Case Type	2001	2002	2003	2004	2005	2006	2007	Total
Augmentation	51	40	93	69	73	87	64	477
Change	47	49	65	32	61	42	53	349
Findings of Diligence	32	60	57	53	79	70	45	396
Injunction	0	0	1	4	7	7	16	35
Multiple	1	3	46	29	5	8	9	101
Other	8	13	12	17	6	3	3	62
Protest to Abandonment	0	24	3	2	1	0	0	30
Surface	14	20	34	17	12	21	11	129
Storage	11	19	30	17	9	13	5	104
To Make Absolute	9	10	7	10	24	30	15	105
Underground	96	101	171	112	83	67	66	696
TOTAL	269	339	519	362	360	348	287	2484

TABLE 7: Division 2, Case Filings by Type, FY2001-2007

Case Type	2001	2002	2003	2004	2005	2006	2007	Total
Augmentation	2	10	11	4	7	9	6	49
Change	26	21	17	13	20	9	9	115
Findings of Diligence	7	24	22	8	8	22	26	117
Injunction	30	34	9	14	6	7	8	108
Multiple	34	46	43	26	37	23	29	238
Other	2	6	3	4	4	6	3	28
Protest to Abandonment	0	13	1	0	0	0	1	15
Petition for Review	0	0	0	0	0	0	1	1
Surface	32	28	14	20	29	21	19	163
Storage	4	2	3	5	3	3	3	23
To Make Absolute	0	6	3	2	5	10	8	34
Underground	7	20	23	16	11	6	29	112
Total	144	210	149	112	130	116	142	1003

TABLE 8: Division 3, Case Filings by Type, FY2001-2007

Case Type	2001	2002	2003	2004	2005	2006	2007	Total
Augmentation	1	0	3	3	3	1	0	11
Change	14	14	24	22	10	15	47	146
Findings of Diligence	4	8	6	4	3	2	5	32
Injunction	2	0	1	2	0	0	1	6
Multiple	3	6	2	0	0	0	1	12
Other	0	1	1	10	2	1	0	15
Protest to Abandonment	0	15	0	0	0	0	0	15
Petition for Review	0	0	0	0	0	0	1	1
Surface	5	10	9	3	3	0	0	30
Storage	0	0	0	1	0	0	0	1
To Make Absolute	5	1	1	1	1	0	1	10
Underground	5	2	5	6	0	1	9	28
Total	39	57	52	52	22	20	65	307

TABLE 9: Division 4, Case Filings by Type, FY2001-2007

Case Type	2001	2002	2003	2004	2005	2006	2007	Total
Augmentation	1	8	7	13	12	24	14	79
Change	27	37	44	21	19	20	15	183
Findings of Diligence	44	42	56	42	25	44	47	300
Multiple	0	3	23	28	20	32	20	126
Other	17	2	1	3	0	1	0	24
Protest to Abandonment	0	8	0	0	0	0	0	8
Surface	140	119	146	97	82	125	74	783
Storage	13	16	35	21	8	27	14	134
To Make Absolute	26	33	31	30	18	30	35	203
Underground	1	4	5	2	2	2	2	18
Total	269	272	348	257	186	305	221	1858

TABLE 10: Division 5, Case Filings by Type, FY2001-2007

Case Type	2001	2002	2003	2004	2005	2006	2007	Total
Augmentation	12	22	37	26	16	26	16	155
Change	24	21	30	35	22	31	22	185
Findings of Diligence	113	139	147	108	111	108	112	838
Multiple	45	72	38	26	38	43	35	297
Other	13	5	9	2	1	1	1	32
Protest to Abandonment	1	31	0	1	1	0	0	34
Surface	78	44	45	49	31	30	36	313
Storage	10	9	8	9	13	9	9	67
To Make Absolute	54	42	39	37	30	61	41	304
Underground	10	12	11	6	5	4	9	57
Total	360	397	364	299	268	313	281	2282

TABLE 11: Division 6, Case Filings by Type, FY2001-2007

Case Type	2001	2002	2003	2004	2005	2006	2007	Total
Augmentation	0	1	1	0	1	1	1	5
Change	12	9	11	10	5	8	7	62
Findings of Diligence	15	37	15	10	12	9	22	120
Injunction	0	0	0	0	0	0	1	1
Multiple	7	10	10	8	3	5	7	50
Other	13	14	12	13	12	8	8	80
Protest to Abandonment	0	5	0	0	0	0	0	5
Surface	41	43	37	35	19	37	29	241
Storage	17	7	10	11	5	6	12	68
To Make Absolute	7	14	8	6	1	8	4	48
Underground	3	4	3	5	3	2	2	22
Total	115	144	107	98	61	84	93	702

TABLE 12: Division 7, Case Filings by Type, FY2001-2007

Case Type	2001	2002	2003	2004	2005	2006	2007	Total
Augmentation	1	1	2	1	1	4	3	13
Change	8	20	23	12	10	9	15	97
Findings of Diligence	20	35	15	26	12	11	20	139
Injunction	1	0	1	0	0	0	0	2
Multiple	1	8	18	10	14	10	16	77
Other	5	2	1	1	2	1	0	12
Protest to Abandonment	0	17	3	0	0	0	0	20
Surface	27	42	49	37	27	68	48	298
Storage	6	6	3	4	0	2	0	21
To Make Absolute	9	14	12	14	9	6	16	80
Underground	5	4	3	0	7	6	14	39
Total	83	149	130	105	82	117	132	798

GRAPH 1:

Statements of Opposition: Average Number Filed Per Case, FY1998-2007

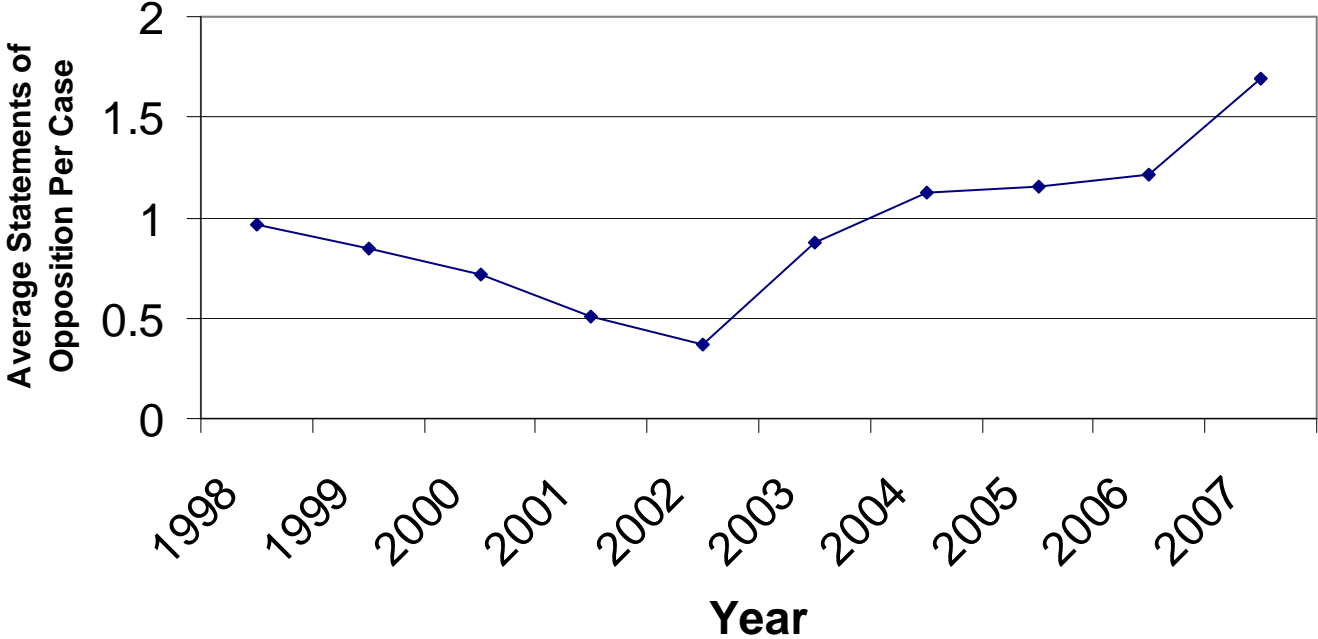


Table 13: Rereferrals and Rates of Rereferral by Number of Opposers
(FY1998-2007)

	Number of Opposers												
	>=20	15-19	10-14	9	8	7	6	5	4	3	2	1	0
Total Cases	71	59	90	53	70	83	123	175	263	388	798	2074	9953
Cases Rereferred	7	5	6	4	7	1	1	6	3	8	11	24	3
Rate of Rereferrals	9.86%	8.47%	6.67%	7.55%	10.00%	1.20%	0.81%	3.43%	1.14%	2.06%	1.38%	1.16%	0.03%

GRAPH 2:

